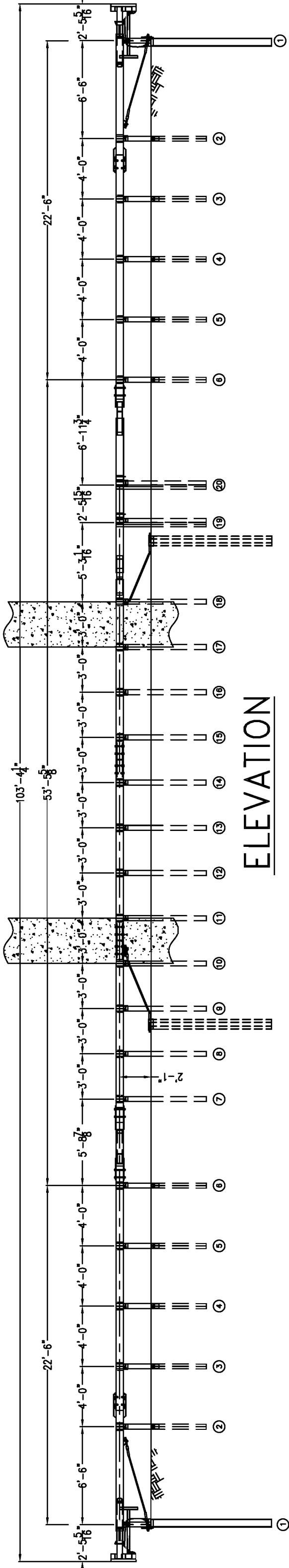
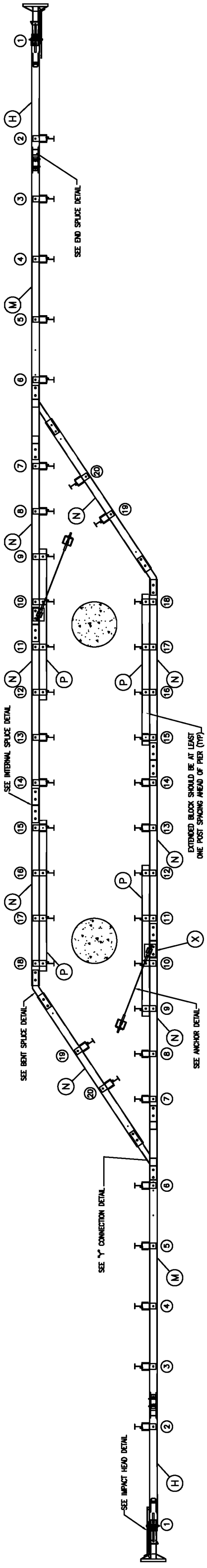
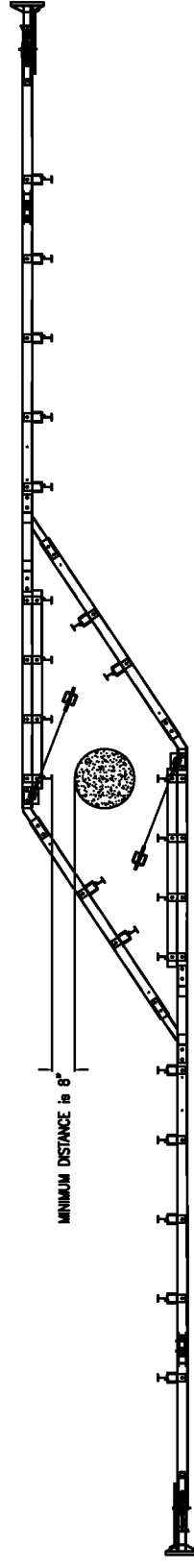


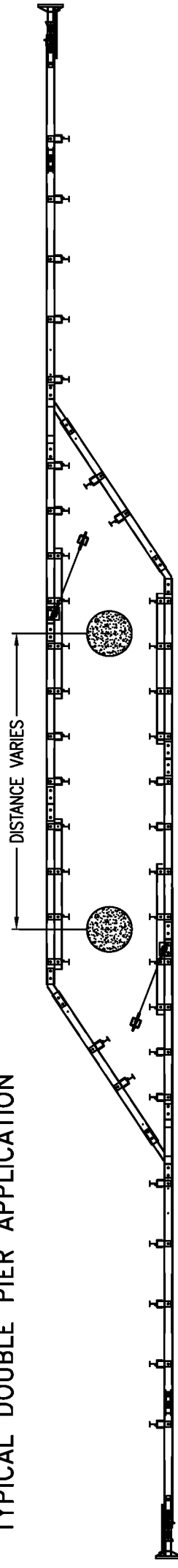
PLAN



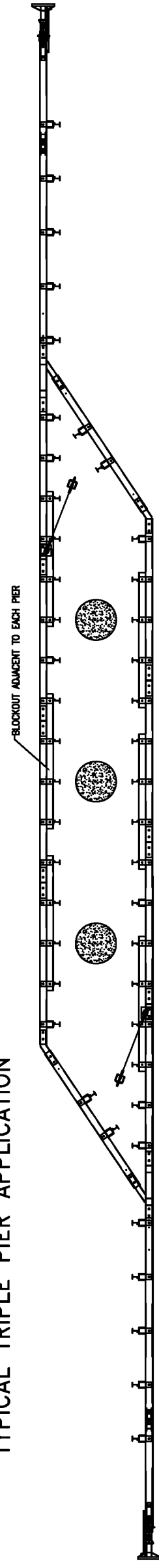
TYPICAL SINGLE PIER APPLICATION



TYPICAL DOUBLE PIER APPLICATION



TYPICAL TRIPLE PIER APPLICATION



General Notes for the BEAT-BP:

- 1.) Unless otherwise noted, all hardware, cable assemblies, tubing, posts, impact heads and other steel components shall be galvanized.
- 2.) When site conditions permit, posts may be driven. If posts are placed in a drilled hole, the backfill material must be satisfactorily compacted to prevent settlement.
- 3.) Contact the manufacturer for installation recommendations when rock is encountered.
- 4.) The lower section of post #1 should not be driven with the upper post section attached.
- 5.) The breakaway cable assembly must be taut. A locking device (vice grips or channel locks) should be used to prevent the cable from twisting when tightening nuts.
- 6.) An object marker meeting State specifications should be installed on the front of the impact head.
- 7.) The approach area in front of the BEAT-BP and the area within the system itself shall be free of fixed obstacles and have a fill slope or a cut slope of 10:1 or flatter.

RSI
Road Systems, Inc.
Big Spring, TX
Phone: 409-266-2435
or Fax: 409-266-0721

BEAT BRIDGE PIER PROTECTION SYSTEM	Sheet	S1
TYPICAL SYSTEM LAYOUT FOR TWO PIERS @ 21' PIER SPACING	Date	05/24/06
BEAT-BP-2P	By	JRR
	Check	NONE